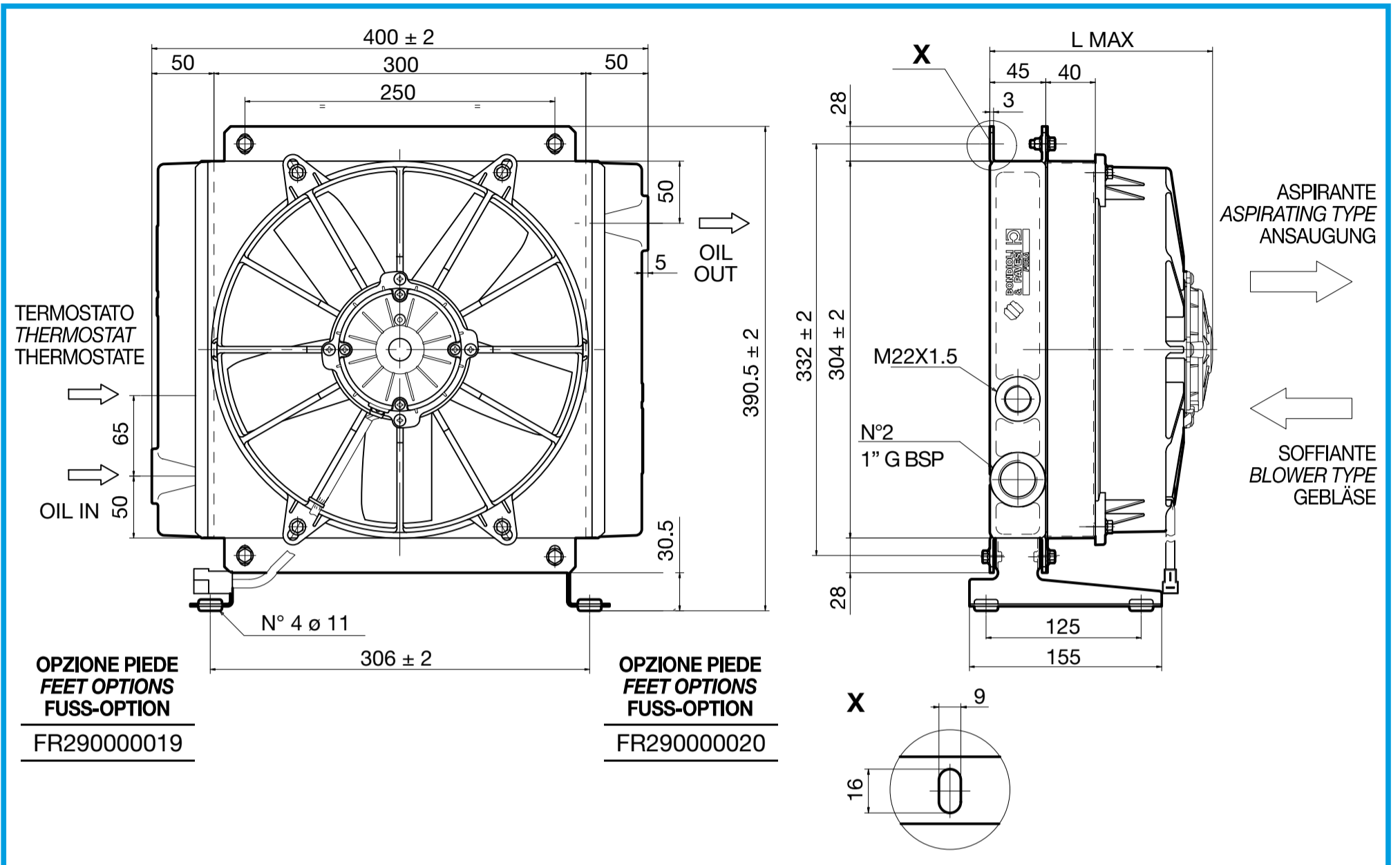
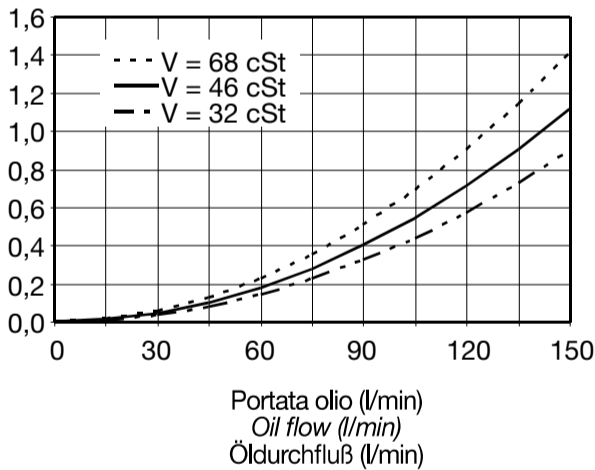


A26

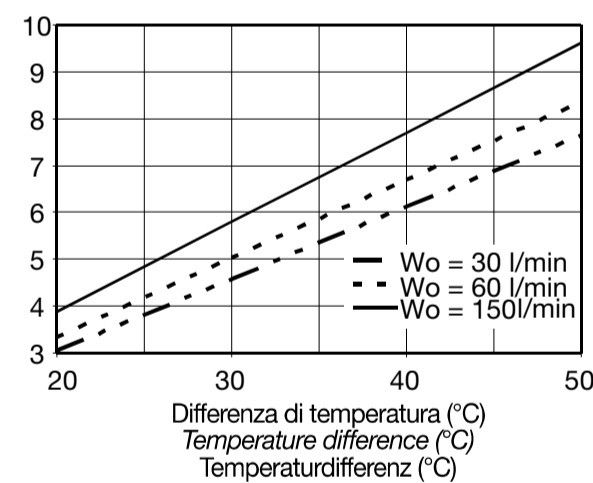
SCAMBIATORI DI CALORE IN ALLUMINIO ALUMINIUM HEAT EXCHANGERS ALUMINIUM WÄRMETAUSCHER



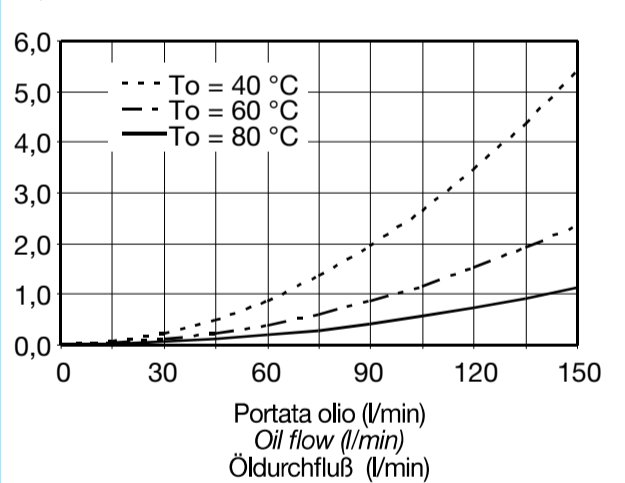
bar Perdita di carico - A26 (Temp.olio = 80 °C)
Pressure drop - A26 (Oil temp. = 80 °C)
Druckgefälle - A26 (Öl temp. = 80 °C)



kW Potenza termica - (kW)
Heatxchange (Thermal) capacity - (kW)
Kühleistung - (kW)



bar Perdita di carico - A26 (Visc. = 46 cSt)
Pressure drop - A26 (Visc. = 46 cSt)
Druckgefälle - A26 (Visc. = 46 cSt)



CODICE CODE BEST.-NR.	TIPO TYPE TYP	DIAMETRO VENTOLA FAN DIAMETER LÜFTERS- DURCHMESSER mm	PORTATA ARIA AIR FLOW LUFT- FÖRDERUNG m³/h	TENSIONE VOLTAGE SPANNUNG V	CORRENTE AMPERAGE STROMSTÄRKE A	L MAX mm	MASSA WEIGHT GEWICHT kg	CAPACITÀ CAPACITY KAPAZITÄT lt
FR633130003	SCM A26 1EAP 12V	280	1420	12	9	160	7	2,3
FR633130004	SCM A26 1ESP 12V	280	1420	12	9	160	7	2,3
FR633130005	SCM A26 1EAX 12V	280	2350	12	15	160	7,8	2,3
FR633130006	SCM A26 1ESX 12V	280	2350	12	15	160	7,8	2,3
FR633130013	SCM A26 1EAP 24V	280	1550	24	5	160	7	2,3
FR633130014	SCM A26 1ESP 24V	280	1550	24	5	160	7	2,3
FR633130015	SCM A26 1EAX 24V	280	2500	24	7	160	7,8	2,3
FR633130016	SCM A26 1ESX 24V	280	2500	24	7	160	7,8	2,3